

DATASHEET 23.01

RONAFLOOR

EPOXY DPM

Moisture tolerant, solvent free epoxy damp proof membrane

FEATURES

 <p>Damp proof membrane</p>	 <p>Moisture tolerant</p>	 <p>Apply to concrete or screed with surface RH < 97%</p>
 <p>Solvent free</p>	 <p>Low odour</p>	 <p>Reduces water vapour permeability</p>
 <p>Reduces waiting time for screed and concrete drying</p>	 <p>Easy to apply</p>	

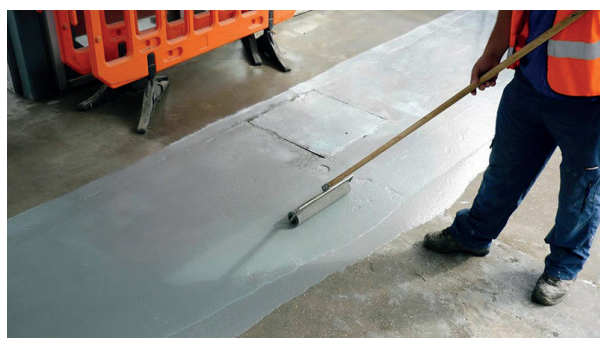
SPECIFICATIONS

Pack Size and Coverage	
Pack size	4.8kg
Number of coats	2
Coverage – first coat	3.5-4.5m ² per kg
Coverage – second coat	3.5-4.5m ² per kg

Physical Properties	
Pot Life	30 minutes at 20°C
Intercoat period	Approximately 24 hours
Apply flooring after	Approximately 24 hours after second coat
ISAT	0.0ml/m ² /sec
Water vapour permeability	<3gm/m ² /day
Bond strength – dry*	>4.0N/mm ²
Bond strength – wet*	>1.5N/mm ²

*In each case failure is in the concrete.

RonaFloor Epoxy DPM is a two-pack solvent free, liquid applied surface damp proof membrane designed to reduce the passage of water vapour. It allows epoxy resins and other moisture sensitive flooring to be applied to screeds and concrete when substrate relative humidity is high, up to 97%.



WORKING TEMPERATURES

The workability and application characteristics of RonaFloor Epoxy DPM are adversely affected by low temperature; viscosity and curing time will increase. Therefore, the material should ideally be stored, mixed and applied at 15°C to 20°C. At lower application temperatures the material

should be stored at or warmed to 15°C to 20°C prior to use. Application characteristics are severely affected below 10°C, minimum application temperature is 5°C.

PACKAGING

RonaFloor Epoxy DPM is supplied in 4.8kg packs.

SHELF LIFE AND STORAGE

RonaFloor Epoxy DPM should be stored in unopened containers in dry warehouse conditions between 10°C and 25°C and protected from direct sunlight and frost. Shelf life is approximately 9 months in these conditions.

How to contact us:

You can contact the Ronacrete office directly on **01279 638700**

Alternatively, you can email us using the email addresses.

Sales
sales@ronacrete.co.uk

Technical
technical@ronacrete.co.uk

Office/ warehouse Ronac House, Flex Meadow, Harlow, Essex CM19 5TD

For more information please refer to technical data sheet.

The information detailed in this leaflet is liable to modification from time to time in the light of experience and of normal product application, and before using, customers are advised to check with Ronacrete Ltd, quoting the reference number, that they possess the latest issue. Any person or company using the product without first making further enquiries as to the suitability of the product for the intended use does so at his own risk, and Ronacrete Ltd can accept no responsibility for the performance of the product, or for any loss or damage arising out of such use.