

## RonaFloor Stone Carpet

Resin bound aggregate system for decorative internal floor surfacing



### FEATURES

- exposed natural or coloured aggregate finish
- quieter than other hard floorings
- warmer than other hard floorings
- more comfortable under foot than other hard floorings
- easily cleaned
- very durable
- UV stable resin will not yellow or darken
- recycled aggregates available
- anti-slip surface dressing available for wet areas

### Description

RonaFloor Stone Carpet is a resin bound aggregate surface for pedestrians and for occasional use by light vehicles. It is used to create decorative and durable surfaces which are seamless and slightly flexible. The surfacing will withstand heavy footfall, light traffic from trolleys and even occasional powered vehicles. Noise from foot traffic is lower than for other hard floorings with noise being absorbed and baffled by the voids. Warm air in the voids makes the surfacing warmer than solid hard flooring and the slight “give” in the system provides a more comfortable experience for pedestrians.

RonaFloor Stone Carpet must be laid onto a sound, stable and solid base such as concrete.

### Typical Applications

- Showrooms, Shops and Supermarkets
- Nightclubs
- Leisure Centres
- Offices
- Public Buildings
- Schools and Colleges
- Hotels
- Homes

### Physical Properties

<b>Minimum Thickness</b>	
Using 0.8—1.8mm aggregate	6mm
Using 1—3mm aggregate	8mm
Using 2—4mm aggregate	10mm
Foot traffic after	24 hours @ 20°C

# RonaFloor Stone Carpet

Resin bound aggregate system for decorative internal floor surfacing

<b>Packaging</b>	<b>RonaFloor Stone Carpet Resin</b>	<b>8.0kg</b>
	<b>RonaFloor Stone Carpet Aggregate</b>	<b>100kg</b>
	<b>RonaFloor Stone Carpet Primer</b>	<b>5kg</b>
	<b>RonaFloor Stone Carpet Fine Aggregate</b>	<b>5kg</b>
<b>Coverage</b>	<b>RonaFloor Stone Carpet Primer</b>	<b>0.14kg/m<sup>2</sup> approx per coat</b>
	<b>Stone Carpet Resin and Aggregate</b>	<b>7.5 m<sup>2</sup> @ 6mm</b>
		<b>5.6 m<sup>2</sup> @ 8mm</b>
		<b>4.5 m<sup>2</sup> @ 10mm</b>
	<b>RonaFloor Stone Carpet Anti-Slip Aggregate</b>	<b>0.1kg/m<sup>2</sup></b>
<b>Slip Resistance (tested with Silver Granite 1-3mm)</b>	<b>Dry (without anti-slip aggregate)</b>	<b>Low Risk (Slip Alert Test)</b>
	<b>Wet (without anti-slip aggregate)</b>	<b>Low Risk (Slip Alert Test)</b>

## Resin and Aggregate

The clear resin used for RonaFloor Stone Carpet will not yellow or darken after exposure to either natural light or the UV emitted by artificial lighting. Cheaper systems will yellow and darken, significantly affecting the appearance.

The performance and appearance of the finished surface is dependent on the aggregates, only correctly blended kiln-dried aggregates of sufficient crushing strength should be used. The RonaFloor Stone Carpet aggregate blends have been designed to achieve strength, wear resistance and decoration.

## Appearance

Samples and materials supplied by Ronacrete are subject to the normal shade and grading variations associated with quarrying and processing of natural aggregates. Uniformity of colour and size of aggregate should not be expected and cannot be achieved. Where wheeled traffic is expected, darker aggregate blends are less likely to show tyre marks.

## Cleaning

RonaFloor Stone Carpet is easily cleaned with a standard vacuum cleaner and because dust settles into the voids below the surface, a clean appearance will be retained for a longer period. Liquid spill are removed with a wet & dry vacuum cleaner.

## Maintenance

Impact damage or severe stress may cause “picking out” of some stones but is likely to be minimal and localised. Any major loss of stone should be reported. Localised damage may be repaired. Ageing and weathering of the original surfacing may prevent an invisible repair.

## Slip Resistance

Application of RonaFloor Stone Carpet Anti-Slip Aggregate will significantly increase the slip resistance of the surface in wet areas such as changing rooms, without substantial change to appearance and its use will help comply with Health and Safety obligations.

# RonaFloor Stone Carpet

## Resin bound aggregate system for decorative internal floor surfacing

### Contractors

RonaFloor Stone Carpet is a specialist product and must only be applied by specialist applicators known to Ronacrete, contractor names can be supplied on request. RonaFloor Stone carpet must only be applied by contractors who can demonstrate that they possess the necessary skills and experience.

### Instructions for Use

#### Substrate Requirements

Only apply to a suitable substrate which is capable of supporting and restraining the RonaFloor Stone Carpet. The best substrate is a well designed, constructed and prepared concrete or screed that achieves a tensile pull off strength no lower than 1.5N/mm<sup>2</sup>. Application to any other surface is likely to result in early failure. If you are unsure of the substrate and its ability to receive RonaFloor Stone Carpet, do not proceed until advice has been taken. RonaFloor Stone Carpet is a thin layer of 6mm minimum thickness or more, depending on the aggregate size. It may therefore mirror and reflect any surface unevenness. Substrates should therefore be levelled or smoothed as required, using the appropriate Ronacrete levelling medium, to ensure that the required finish is achieved.

#### Preparation and Priming of Substrate

1. Remove any laitance and provide a light surface texture
2. Ensure the substrate is clean and dry.
3. RonaFloor Stone Carpet Primer is a two part system.
4. Pour the contents of Part B into the Part A bucket and mix with a slow speed drill ( $\leq 450$ RPM) and MR2 paddle mixer attachment for 3 minutes
5. Apply a uniform coat by roller to the substrate at the rate of 0.14kg per m<sup>2</sup> and immediately scatter with 16/30 kiln-dried sand at approximately 0.1kg per m<sup>2</sup>. This provides a key for laying RonaFloor Stone Carpet. On porous substrates more than one coat of primer may be required.
6. Allow the primer to harden, before laying RonaFloor Stone Carpet. (this may take 24 hours at 20°C)

#### Application of RonaFloor Stone Carpet.

1. Only use RonaFloor Stone Carpet aggregate
2. Only apply to a correctly primed substrate.
3. Place RonaFloor Stone Carpet Decorative Aggregate into a clean, dry, forced action mixer. The mixer capacity must be no less than 120 litres, Baron M200.
4. Scrape all of the contents of RonaFloor Stone Carpet Hardener Component into the resin and mix with a slow speed drill ( $\leq 450$ RPM) and MR2 paddle mixer attachment for 2 minutes. Keep mixing time to a minimum to avoid a build up of heat.
5. Immediately add the mixed resin to the aggregate in the mixer and continue mixing for 3-4 minutes, avoid overmixing. To reduce heating of the mix and to optimise working time, immediately discharge the mixed resin and aggregate onto the prepared surface, level and smooth.
6. Finish the surface with a suitable float.
7. If required, immediately cast RonaFloor Stone Carpet Anti-Slip Aggregate onto the top surface of the wet resin and aggregate, at the rate of approximately 0.1kg/m<sup>2</sup>. Ensure even coverage to prevent a patchy appearance.
8. Allow to cure.

# RonaFloor Stone Carpet

Resin bound aggregate system for decorative internal floor surfacing

## Working Temperatures

RonaFloor Stone Carpet Resin is rapid setting . It's pot life and working time is affected by the temperature of the material, air and substrate. At temperatures above 25°C the pot life and working time may be insufficient to allow its proper application. Work should therefore not proceed when product, air or substrate temperature exceed 25°C. At low temperatures the resin will not flow sufficiently to achieve a smooth finish and work should not proceed when air, material or substrate temperature is below 5°C. Between 5 and 10°C materials should be kept warm before use.

## Shelf Life and Storage

Shelf life of RonaFloor Stone Carpet Resin is 6 months, aggregates have an unlimited shelf life. Store materials in clean, dry, frost free warehouse conditions between 5°C and 25°C. Protect from sunlight.

## Shelf Life and Storage

Refer to Safety Data Sheet.

## Health and Safety

When on site Ronacrete representatives are able, if asked, to give a general indication of the correct method of installing a Ronacrete product. It is important to bear in mind that Ronacrete Ltd is a manufacturer and not an application contractor and it is therefore the responsibility of the contractor and his employer to ensure he is aware of and implements the correct practices and procedures to ensure the correct installation of the product and that liability for its correct installation lies with the contractor and not with Ronacrete Ltd.

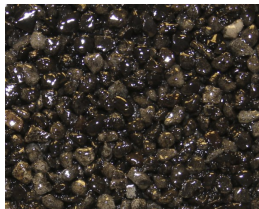


# RonaFloor Stone Carpet

Resin bound aggregate system for decorative internal floor surfacing



*Ash Quartz 2-4mm*



*Black 2-4mm*



*Blue 0.8-1.8mm*



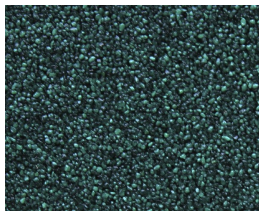
*Blue 2-4mm*



*Brittany Bronze 1-3mm*



*Danish Quartz 1-3mm*



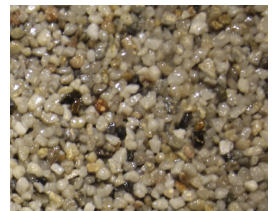
*Green 0.8-1.8mm*



*Green 2-4mm*



*Light Grey 2-4mm*



*Light Sesame 2-4mm*



*Mid Grey 2-4mm*



*Ochre 0.8-1.8mm*



*Red 0.8-1.8mm*



*Red 2-4mm*



*Red Granite 1-3mm*



*Silver Granite 1-3mm*



*Terracotta 2-4mm*



The information detailed in this leaflet is liable to modification from time to time in the light of experience and of normal product application, and before using, customers are advised to check with Ronacrete Ltd, quoting the reference number, that they possess the latest issue. Any person or company using the product without first making further enquiries as to the suitability of the product for the intended use does so at his own risk, and Ronacrete Ltd can accept no responsibility for the performance of the product, or for any loss or damage arising out of such use.