



# RonaDeck

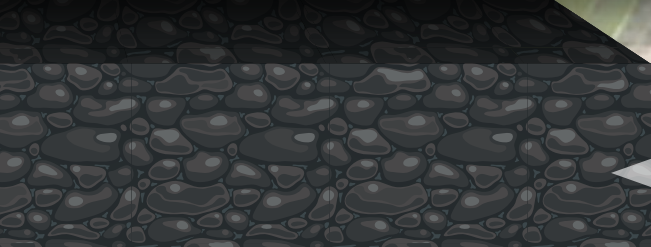
## Resin Bound Surfacing

**DRIVEWAYS** - SuDS Compliant\*



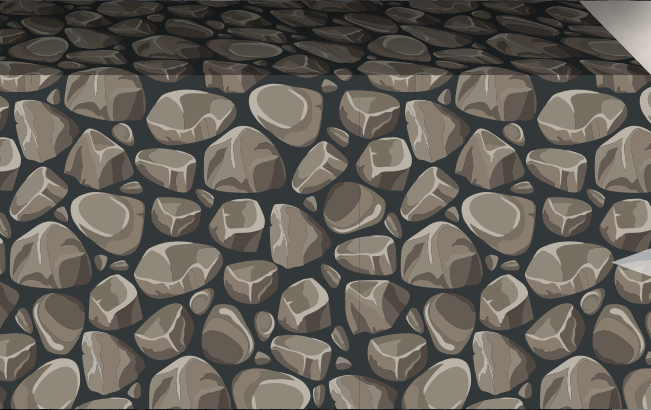
### RESIN BOUND SURFACING

RonaDeck Resin Bound Surfacing minimum **15mm** thickness or minimum 18mm for four wheel drive or heavy cars and vans with optional RonaDeck Resin Bound Surfacing Anti-Slip Aggregate .



### BINDER COURSE

**80mm** minimum depth of AC14 open graded asphalt concrete (macadam) maximum 100/150 pen binder to BS EN 13108-1.

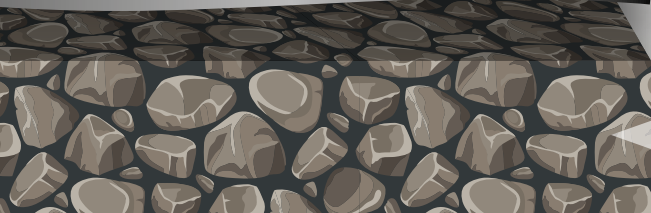


### GRANULAR SUB-BASE

**200mm** minimum well compacted Type 3 granular sub-base or similar approved.

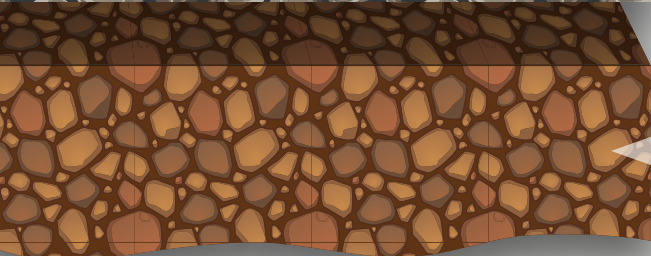


### GEOTEXTILE MEMBRANE



### CAPPING LAYER

If required, depending on sub-grade condition.



### SUB-GRADE



Ronacrete, Ronac House, Flex Meadow, Harlow, Essex CM19 5TD UK  
Tel: +44 (0) 1279 638700 E-mail: [tech@ronacrete.co.uk](mailto:tech@ronacrete.co.uk)







Argent Rouge



Autumn Forest



Aztec Gold



Dalmatian



Dorest Gold - 10mm



Harvest Crunch



Lunar



Maple Glow



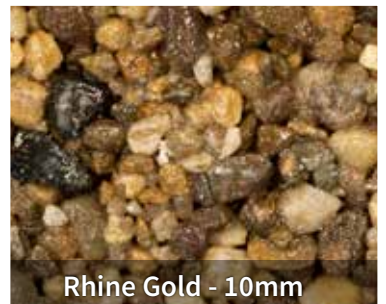
Midnight



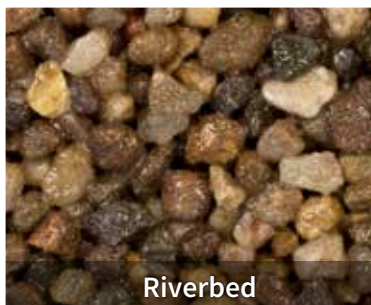
Night Sky



Quartz Parallel



Rhine Gold - 10mm



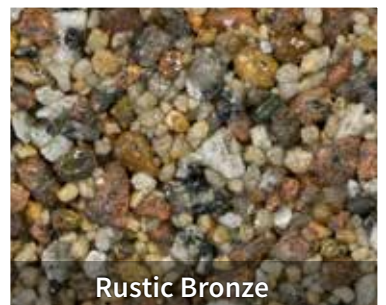
Riverbed



Rouge Blanc



Rouge



Rustic Bronze



Silver Granite - 10mm



Ronac House, Flex Meadow, Harlow,

Essex CM19 5TD UK

Tel: +44 (0) 1279 638700

E-mail: [tech@ronacrete.co.uk](mailto:tech@ronacrete.co.uk)



Silver Moon



Terracotta - 10mm



Terracotta Gold



Terracotta Snow



Terracotta Medium

- \* RonaDeck Resin Bound Surfaces can be applied to suitably constructed asphalt concrete or concrete surface. Care should be taken when designing constructions subject to vehicle weights up to 7.5 tonnes, high levels of car movement or heavy footfall may require greater depth of construction. Expansion and/ or construction joints in concrete should be expressed in the surfacing. Any imperfections or static cracks should be repaired with Ronafix polymer/cement mortars or similar.
  - \* A suitable edging should be provided to prevent damage to edges of the surfacing. Surfacing should not be bonded to edgings which are liable to movement and isolation joints are recommended.
  - \* If existing sub grade is unstable, it may be necessary to stabilise it with a granular capping layer.
  - \* The base should be laid to falls when surfacing is to be applied to concrete or close graded asphalt concrete.
  - \* Total base and sub-base thickness will be dictated by loading and in the case of permeable construction, drainage requirements.
- Any advice, recommendation or information given by Ronacrete is based on practical experience and is believed to be accurate at the time of publication, no liability or responsibility of any kind (including liability for negligence) is accepted in this respect by the company, its servants, or agents. The figures quoted do not constitute a specification, they represent typical values obtained for this product. It is the responsibility of the designer to ensure that construction build-ups are suitable for particular site conditions.